



BROST ARCHITECTS & PLANNERS LTD

October 2012 Newsletter : 1

Testimonial

Just a note to again express deep appreciation for all the work and effort put forth by you and your organization in the layout and development, together with the completion, of The Henry B. Tippie Annex addition to the Belle Plaine Museum, formally dedicated August 25, 2012. It is doubtful that this project would have taken place, let alone be completed, without your perseverance.

Unfortunately, there were unplanned hiccups early on, which came very close to shutting the entire project down. Your dedication and assistance in helping work through said problems played a major role in keeping the project intact. I have told many people about you putting forth effort beyond what I call the architectural area. I haven't seen too many people in the architecture field do this over the years.

A lot of compliments have been expressed about the building, its design and how it complements the existing museum. You and your organization should be very proud of this accomplishment.

Continued on Page 2

Henry B. Tippie Annex: Addition to the Belle Plaine Area Museum

We are proud to announce that on Saturday, August 25th 2012, the Henry B. Tippie Annex to the Belle Plaine Area Museum was dedicated with a grand opening ceremony.



Photographed at the ribbon cutting (from left to right): Dave Fish, Bev Winkie, Norm Nielsen, Terry Branstad, Sally Mason, Henry B. Tippie, and Patricia Tippie.

In 2010, design began on an addition to the existing Belle Plaine Area Museum, in order to house a new exhibit of artifacts chronicling the life of notable Iowa native, philanthropist, and businessman, Henry B. Tippie. The Henry B. Tippie Annex was designed in partnership with Brost Architects and Planners, museum consultant Bob Bodnar, West Plains Engineering, DCL Consulting Engineers, and Hall & Hall Engineers. The general contractor for this project was Huff Contracting. This successful project is the result of collaboration between all of the design professionals, the construction team, the Belle Plaine Historical Society, and Henry B. and Patricia Tippie and their family.

This building was designed as an addition to the existing Belle Plaine Area



BROST ARCHITECTS & PLANNERS LTD

October 2012 Newsletter : 2

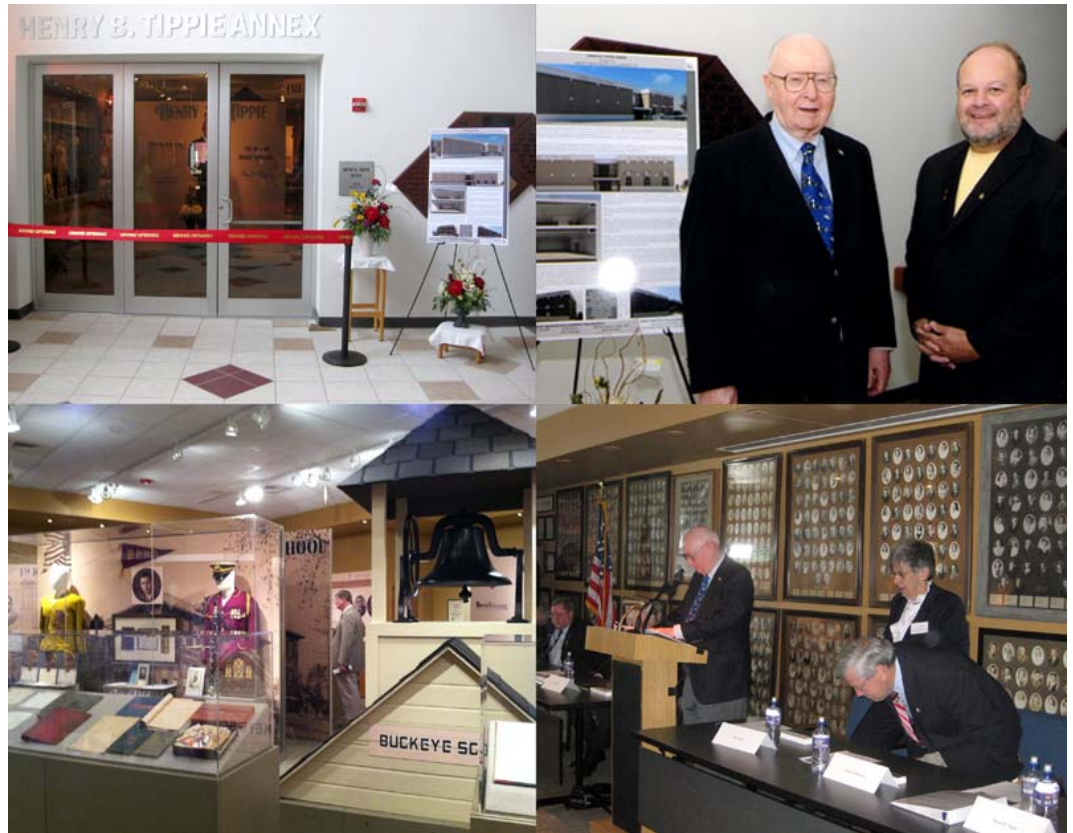
I would be very happy to talk with anybody about you and your organization as a reference. I don't think they could find a better operation. With all best wishes for your continued success.

Sincerely, Henry B. Tippie

Visit

The Belle Plaine Area Museum is located at the intersection of 12th Street and 9th Avenue, in downtown Belle Plaine, Iowa. Museum hours are Friday-Sunday from 1:00pm to 4:00pm. The museum will schedule special appointments and guided tours for guests. For more information, call 319-434-6093.

Museum, in Belle Plaine, Iowa. The addition is intended to blend in with the existing museum, both in scale and materials. The building also blends into the historic nature of downtown Belle Plaine. The Henry B. Tippie Annex was designed to be full of memorabilia, saved by the Belle Plaine native farm boy, that details his entire life.



Photos Include: Entrance to the Henry B. Tippie Annex, Henry B. Tippie and Dave Brost Jr., Childhood Displays, and the Dedication Ceremony of the Henry B. Tippie Annex

The building's structure of precast hollow core concrete planks was chosen in order to minimize the depth of structure to allow for higher ceilings in the exhibit areas. This allows for notable displays, such as a reconstructed one room school house bell tower. With a conventional water based fire sprinkler system, the various paper and cloth artifacts in the museum could potentially be destroyed by either fire or water in the event of a building fire. So for this project, a clean agent system was specified that deploys non-toxic chemicals to quickly extinguish any fires without damaging the items on display.

This museum addition added over 5,000 square feet of space to the existing



BROST ARCHITECTS & PLANNERS LTD

October 2012 Newsletter : 3

About Us

Since its formation in 1968, Brost Architects & Planners LTD has demonstrated its commitment to architectural problem solving on a full range of projects throughout Iowa and surrounding states. We take great pride in our record of developing distinctive solutions to complex problems within the budget established and in our reputation for improving the environment of the communities where we are privileged to work.

We promote environmentally friendly design and have LEED accredited professionals. We are a family owned and operated firm that has strong ties to the Iowa community. We're talented enough to handle almost any project, but personal enough to value your business. We have strong relationships with our consultants as well as our clients.

Contact Us

For more information: visit www.brostarchitects.com, call us at 319-366-8531, or send us an email at brostarch@brostarchitect.com. To receive our monthly newsletter, visit the "Contact Us" page on our website and sign up for our email newsletter.

facility. Spaces that were added include display areas, a research lab, mechanical room, entry vestibule, and exit stair tower.

The formal dedication of the Henry B. Tippie Annex to the Belle Plaine Museum was held on August 25, 2012, at ten thirty in the morning. Those participating in the dedication included Belle Plaine Historical Society President Bev Winkie, Iowa Governor Terry Branstad, Belle Plaine Mayor, Dave Fish, University of Iowa President, Sally Mason, and Kirkwood Community College Retired President, Norm Nielsen. The Henry B. Tippie Annex is now open to the public.



Thank You

A special thanks goes out to Henry B. and Patricia Tippie for trusting us to help create a home for your wonderful personal collection.

Thank you to Ernie Tippie, for connecting us with your brother. Without you, none of this would have happened.

Thank you to the Belle Plaine Historical Society for your wisdom.

Thanks to Bev Winkie. Your positivity has been constant and inspiring.

Thank you to all construction personnel, especially to Chad Kelley and the staff at Huff Contracting.

Thanks to all the design professionals, including Bob Bodnar, Russ Allen and Jeff Reinhart of West Plains Engineering, Dave Loomis of DCL Consultants, Nick Bettis of Hall & Hall Engineers, and many others. Without your cooperation, this would not have been possible.